



- ▶ LARGO HIGH SCHOOL HISTORY 2
- ▶ ExCEL STAFF..... 3
- ▶ SCHOOL BUS 4
- ▶ FOUNDATIONS OF EXCELLENCE
KHAN ACADEMY
SCHOOL HOURS
- ▶ ADVANCED PLACEMENT &
DUAL ENROLLMENT 5
- ▶ FOCUS 6
- ▶ SCHOOL SUPPLIES
PROGRAM WISH LIST
FLASHDRIVE
- ▶ SUMMER READING REQUIREMENT 7
- ▶ Ms. HOWARD
- ▶ ATTENDANCE 8
- ▶ NEW CAMPUS 9
- ▶ BRICK, MAGNET, & LARGO GEAR 10
- ▶ REFRIGERATOR PAGE 11

○ ISSUE | ○ Spring | ○ 2016

ExCEL

ExCEL



Welcome new Packers!

Congratulations and welcome to the ExCEL Magnet Program at Largo High School. We are very excited to have you join our outstanding population of students who are motivated and enthusiastic about learning.

This special edition newsletter is designed to give our incoming students an introduction to our program and staff.

The ExCEL magnet program consists of our Assistant Principal/Magnet Coordinator, Joshua Wolfenden; our guidance counselor, Shelley Steele and our secretary, Debra Howard, and 14 teachers from various disciplines. Our program has been in existence since 1993. On the back page of this newsletter are our email addresses and contact telephone numbers.

Ms. Howard, our magnet secretary, is your primary contact with the school. Consider her your secretary. If your child is out sick, you will report that attendance to her. She is your advocate and help you through the bureaucracy of our processes.

We receive many compliments each year from parents on our strong communication with parents on school activities and news. We attempt to send as much information as possible electronically to cut the cost of printing and postage. Going electronic also provides parents with information delivered in a timely manner. **Please email Ms. Howard (howardd@pcsb.org) your email address and child's name.** You can include up to three email addresses in your contact profile.

ExCEL
New Student
Orientation
May 12
6:30 p.m.
In Cafeteria

250 1st Ave NE—
(Old Largo Central
Elementary Building)

Largo High School

Welcome to Largo High School. "Lunch was out of the ordinary that day. Mrs. Brook had invited all Largo School students to her house. She felt obligated to do so since her hogs had invaded the cloakroom of Largo's first school and eaten the food out of the students' lunch pails. The year was 1890.

Largo's first school, called Largo School No. 1, was a red, two-story building located on the site that is now Largo's Ulmer Park on West Bay Drive. The school was surrounded by a wire fence with a stile, which allowed students to enter but kept the livestock out." (*Golden Anniversary of Pinellas Schools*).

Largo High School was established in 1914. The original school site was across the street from the Pinellas County School Board building. In those early days, students had periodic breaks from their day to water and feed their transportation to school—their horses!

Back in 1957, Largo High School opened its doors to its location here on Missouri Avenue. Those original buildings remained much as they did back then—with the addition of air conditioning (in the late 1970's) and carpeting (1990's). Back in those early days, students at Largo High School could walk to the nearby Vocational Technical School, formerly Largo Central Elementary, now the main structure of Largo High School's temporary campus. Young men took agriculture courses that included training on how to care for livestock, maintaining equipment, and farming. Young ladies studied the science of homemaking including sewing and cooking.

The NEW Largo High School will be ready for occupancy in



Architect's rendering of new campus.
Buildings 1 & 2 are classrooms & offices
Building 3 is the Library, Cafeteria and Gym
Building 4 is the Auditorium, Band, Chorus and Welding Rooms

May 2016 (just days away).

Largo High School is proud of its heritage and many traditions which include our annual "Farmers' Day" when we compete in a football game against the "city kids" of Clearwater High School.

We are known as the "Packers." The city of Largo had a rich history as a farming community which exported citrus throughout the United States. A citrus packing plant once stood near the railroad tracks of Largo's Central Park. Workers in this industry were called packers, hence our name.

The Packer Pig, our school mascot, came from our football team in the 70s which would tear up the field like rooting hogs.

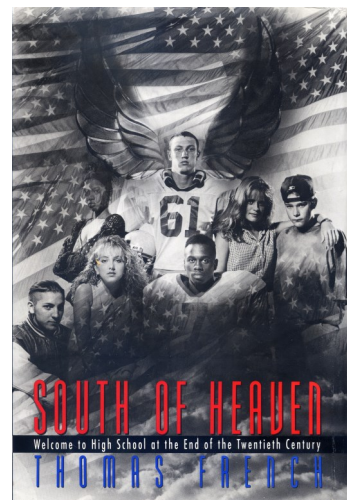


Largo High School colors are royal blue and gold. The school seal contains three images representing the school; oranges, a talaria, and an image from the Florida State Seal showing a Native American standing on the shoreline with a Sego Palm, a Spanish sailing vessel, and our setting sun.



Other Key Largo High School Facts:

- Largo High School's band was started by a cornet player from John Philip Sousa's original band.
- Largo High School was the first school to pioneer a new dress code that allowed students to wear shorts. Using our model, Pinellas County Schools adopted a new dress code policy permitting students to wear shorts to school.
- St. Petersburg Times reporter and author, Tom French, spent a year following several Largo High School students. First published in a nine week series called "**South of Heaven**," his candid look at teenagers and their lives, in and out of school, received national attention. The following year his series was published by Doubleday.



Meet the ExCEL Staff



Joshua Wolfenden,
Assistant Principal & ExCEL Coordinator

Mr. Wolfenden has been the ExCEL coordinator since 2011. He came to us from Clearwater High School where he taught Spanish. Mr. "Wolf" has a philosophy of support for our students and works hard to ensure success in all students. He holds Friday tutoring sessions for struggling students. Mr. Wolfenden is from Miami. His wife works as Choral Director at Madeira Beach Fundamental. The Wolfendens' have 2 young sons, Jacob and Caleb.



Shelley Steele,
ExCEL Guidance Counselor & AVID Coordinator

Ms. Steele joined us in 2015. She came to us from Countryside HS as their AVID Coordinator and their former guidance counselor. She has a young son.



Deb Howard,
ExCEL Secretary (1996)

Ms. Howard has been at Largo High School since 1989. She manages the ExCEL office and assists parents & students. She has a granddaughter in ExCEL.

ExCEL teachers are selected for expertise in their discipline and their commitment to our students. The year next to their title indicates the year they started in ExCEL.



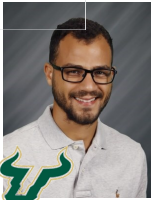
Steve Beck,
ExCEL AVID Instructor (2012)

Mr. Beck is our Golf & Tennis Coach. His wife Patti teaches in the IB program here at LHS. The Becks' have 2 adult sons—Largo alums! Mr. Beck is a former chef.



Joseph Cox,
ExCEL Science Instructor (2015)

Mr. Cox teaches our Chemistry courses. Mr. Cox is the Science Olympiad sponsor. Mr. Cox grew up in rural Indiana.



Jeromy Johnson,
ExCEL AVID Instructor (2015)

Prior to joining ExCEL, Mr. Johnson was an outdoor adventure educator. Mr. Johnson and his wife have a young son. Mr. Johnson graduated from PPHS' CJA.



Mike Klapka,
ExCEL Social Studies Instructor (1993)

Mr. Klapka was one of the original ExCEL teachers in 1993. Mr. Klapka teaches about Lincoln and normally looks less Lincoln-like. He graduated from Clearwater HS & both Klapka boys graduated from ExCEL.



Nicole McKenna,
ExCEL English Instructor (1995/2011)

Ms. McKenna joined us in 1995, left for a few years and returned in 2011. She teaches our junior English class and is the NEHS advisor. She graduated from Dunedin HS.



Bethany Petz,
ExCEL Math Instructor (2012)

The Petz's have 2 small children and Teylor, who attends ExCEL. Mrs. Petz graduated from Largo!



Jennifer Wheeler,
ExCEL Math Instructor (2003)

Ms. Wheeler enjoys wilderness camping in her free time and has lived in Ireland.



Allison Bryant,
ExCEL Science Instructor, Science DP Head (1995)

Ms. Bryant, our "Goddess of Wisdom," is a bit camera shy. She graduated from Boca Ciega & her daughter graduated from ExCEL in 2007.



Stefanie Frump,
ExCEL Science Instructor (2013)

Ms. Frump has a passion for scuba diving and has dove the major reefs of the world. She teaches both Biology & Marine Science. The Frumps' have a young daughter.



Scott Kaplan,
ExCEL Social Studies & SS Dept Head (2001)

He is the Academic Team Coach and sponsor of the Octagon Club. He is an passionate trivia contestant. (The yearbook theme was painting the new school.)



Melissa Lyons,
ExCEL English Instructor (2014)

Mrs. Lyons teaches our senior English classes and is the EBSA sponsor. Mr. Lyons is an AP at another school & they have 2 young children.



Erin Morris,
ExCEL Social Studies Instructor (2011)

Ms. Morris teaches our world history courses and AP Euro course. Ms. Morris has two young children. After school she can often be seen running our track.



Kathy Seitz,
ExCEL English Instructor (2002)

Mrs. Seitz teaches our freshman English course. Two of Mrs. Seitz's 3 boys graduated from ExCEL. Our students call her "Momma Seitz."

School Bus Transportation —Postcards to be mailed

Postcards will be mailed to all PCSB students who ride the bus. How does PCSB determine who will ride the bus? The system uses your registered address and your designated school to determine if you need transportation to school.

Students who live within 2 miles of Largo High School are considered within walking distance of LHS. Bus transportation is provided to all **magnet** and zoned students who live outside the 2 mile radius.

Please take a moment to review your address in Focus.

To change your address, go to the Student Reservation (<http://reservation.pcsb.org>). Using your Focus password, you will be directed to a page which enables you to update your address.

Largo High School

Student Hours 7:05 to 1:35

Office Hours 6:30 to 3:00*

*not every department is open



Building Camaraderie

Workshops & activities begin early

Studies show that students who are involved in school and feel a sense of community with the student population are more likely to excel in school.

With that in mind, the magnet program offers its new students a workshop taught in September. We call our workshop "**The Foundations of Excellence**" which is a little play on our name. The workshop has students learn some basic concepts on quality tools, strategies for high school success and some team building activities. The entire workshop is coordinated by two senior students with a team of upper classmen. These students will conduct the entire workshop.

During the workshop students will create skits to present in clever ways. For example, students will draw papers from a fish bowl to uncover what television show will be their team's theme to a skit. Imagine presenting about getting to school on time to the TV show American Idol or using Blue's Clues to explain how to use a daily planner—it can be very entertaining.

During this workshop students will also do warm-up activities that challenge them to think.

The activities are designed to help initiate our students and begin the strong bonds of a team.



Please make sure to click "change address ONLY" otherwise you will be withdrawn from the magnet program and sent to your zoned school.

The process is not complete until you bring in two (2) proofs of address into your child's **current** school. Proof of address may be a utility bill, lease agreement, or any service on your dwelling.

It takes approximately **10 days to change a bus route**. Once the proposed routes are complete, it is very difficult to have stops added or moved. Don't wait! Call Ms. Howard if you have questions or need assistance.



Khan Academy



www.khanacademy.org

It started as a project to help family with tutoring over a long distance. Salman Khan (who has 3 degrees from MIT) used the internet to post tutorials he created to demonstrate the topic he was teaching. In 2006 Khan Academy was launched which offers online tutoring free to all.

The site consists of topic areas of school instruction from elementary to college level topics. It was recently expanded to offer financial planning to older adults too.

Select a topic discipline and subtopic area. For example, Chemistry, covalent bonds. Users will select the subtopic and watch a brief video followed by a short test of comprehension. If the user doesn't understand, another video is presented.

This remote tutoring program enables students to get help from the finest teaching professionals at any hour of the day or night.

Bookmark the site in your favorites. It is one of many useful online tools available on the web. See Largo High School's home page for more useful sites, school information and calendar of activities.

www.largo-hs.pcsb.org

College Credit in High School

Advanced Placement® & Dual Enrollment

ExCEL students have the opportunity to take college-level courses in a high school setting as early as 9th grade. These courses are free to our students. Students have the opportunity to earn many college credit courses without leaving Largo High School. By taking college-level courses here students are in an environment receptive to teenagers and are learning with teachers willing to work with students toward their success. There are two types of college-level courses here at Largo High School.

Advanced Placement

The College Board is a not-for-profit organization which governs and administers the PSAT, SAT and AP tests. The Advanced Placement (AP) course is nationally recognized for its standardized curriculum and test. Each student achieving credit is recognized by colleges as having an equal understanding of the subject. Largo High School offers a wide variety of Advanced Placement courses.

Students should expect a rigorous class environment and heavy homework load for each AP course. Students will be administered the AP exam in the spring and must pass the test with a 3 or better on a 5 scale to receive college credit. Teachers will work hard as academic coaches with practice tests to help each student.

AP instructors need a bachelors degree, have an approved course syllabus by the College Board and take training in teaching at the AP level.

Dual Enrollment

Dual Enrollment courses are accredited by St. Petersburg college. DE classes are available only to juniors or seniors who have past the college placement tests. Students will receive college credit if they pass the course with a "C" or better. These courses are taught at a college level and are a great way for students to have the rigor of college in a high school setting. SPC requires its professors to have a master's degree in the subject being taught. Therefore an instructor who teaches English will have their master's degree and curriculum in English.

Who should consider AP or DE?

One complaint frequently heard by teachers who teach college-level courses is that the student was not ready for the rigor of the course. The student made a course selection that is currently beyond his/her skills. These are not high school courses. They are college courses being hosted at a high school.

Students who take honors level courses and receive As or high Bs could consider taking a college level course. Students should expect to have a heavy course load for each

course and nightly homework. AP level courses demand persuasive essay writing and extensive reading. Expect nightly homework.

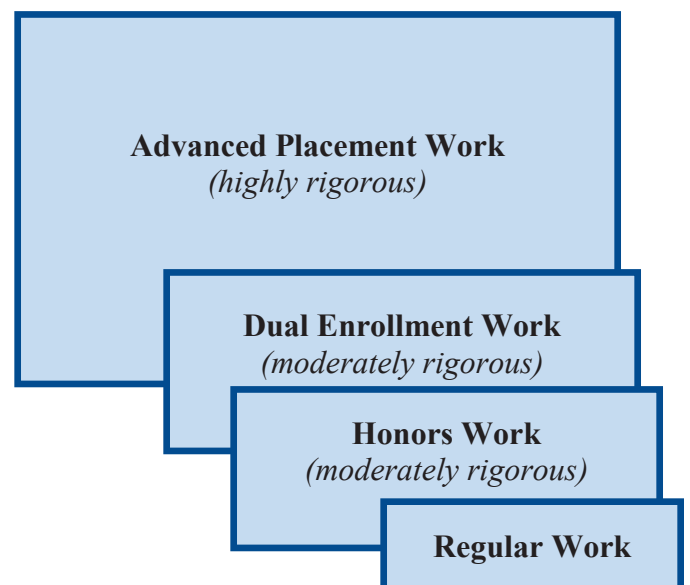
The courses also demand the student to be proactive and prepared for class each day. Studying class material prior to covering the subject is a good habit for a successful student.

Why take AP or DE—what do the colleges want?

You should always challenge yourself to take courses that offer greater rigor; however, you also must recognize your own study habits and commitment to the course. Have you laid the foundation for success? Are you jumping too far ahead of your own learning potential (like jumping into the deep end of the pool...can you swim?)?

What do colleges want to see? According to Education.com, "colleges want to see that applicants challenge themselves." With that said, colleges also expect that if you take the course you will show success. "If you think that just being in an accelerated course and barely passing is going to impress a college admissions person, then you are mistaken."

A good start for taking AP courses is Human Geography. APHG is considered one of the easiest AP classes to pass. Students will study geography, cultures and societies.

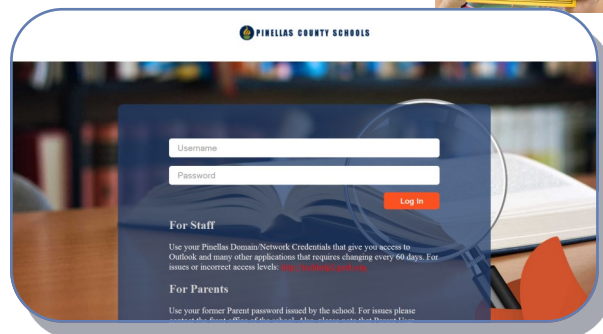


Focus—*Parent's best friend*

Focus provides parents and students with real-time updates on grades, attendance and communication with teachers. To log-in, go to:

<http://focus.pcsb.org>

Parents should see their child or children's records. Parents who don't see a current schedule or student name should call Ms. Howard to have their child's records attached to their account. Click the course or grade and the user will see the assignments and grades for those assignments. Click the box next to the teacher's name and you may email the teacher questions. If you are having issues with Focus, please contact Ms. Howard. Resetting your password normally resolves most issues.



School Supplies - Shopping List

1. **Flash Drive**
2. 3" Binder
3. 1" Binders (need 3)
4. Scientific calculator (no cell phone calculator)
5. 8 dividers for English binder
6. Pocketed folders
7. Blue & black ink pens
8. Colored markers
9. Construction Paper
10. Colored pencils
11. Pencils
12. Graph Paper
13. Highlighters
14. White Glue
15. Index Cards
16. Glue Sticks

Program Wish List Items:

- ☆ Gift cards to Publix, Walmart, Target, Winn Dixie, etc. used to purchase food for perfect grade celebrations.
- ☆ Facial tissues
- ☆ Clorox/Lysol Wipes
- ☆ Hand sanitizer
- ☆ Loose-leaf paper or spiral bound notebooks for students-in-need
- ☆ Composition Books

Flash drive keeping yours safe

Hi, I belong to
Ashley!



A wealth of information can be contained on your flash drive — except who they belong to when lost. Every student should have one for high school.

To help reunite the owner to flash drive, Ms. Howard suggests renaming it with your first initial and last name.

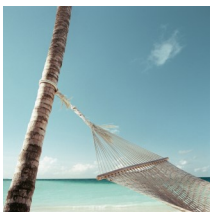
1. From **Start**
2. Select **Computer**
3. Click your flash drive from list of drives on the screen
4. Right click your flash drive and select "rename."

Summer Reading

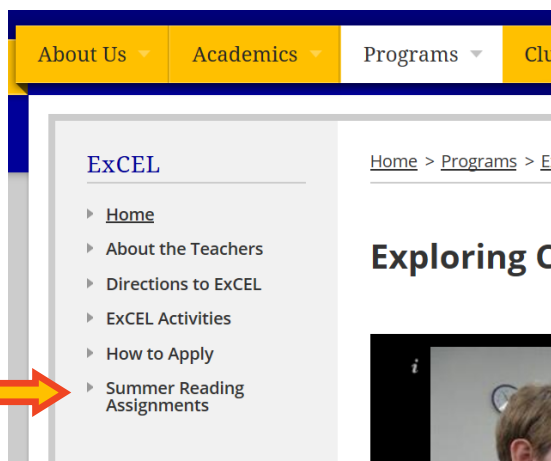
Honors and Advanced Placement courses have summer **REQUIRED**

READING. You will find a list of courses, books and assignments on our ExCEL web site. Look for **Summer Reading Assignments** on the left toolbar.

If you intend on borrowing the book from the library, go early as many use these services. If you are purchasing the book, look for used books available online. Many titles can be downloaded on a Kindle or other book reader.



Enjoy summer. Find a quiet place to read and reflect. Remember this summer is only six (6) weeks long!



For all ExCEL magnet students and parents, your contact with the school is Ms. Howard, our magnet secretary.

Ms. Howard has been at Largo High School since 1989. She welcomes children of alumni with memories of their parents' high school "activities" and for a small bribe can forget those activities too. :)

Along with her many duties, she has the responsibility to record and update attendance for all ExCEL students.

Please submit all documentation to her desk. To help her keep accurate records, please make sure your child's name is clearly on the documentation and a contact number is available too.

She is here to help parents, students and teachers. Have a question about policy, call her. Need to get a message to a teacher, call her. Need to print a class report, see her. Project due and you need ribbon to make it complete, she probably has a supply.

Unique to ExCEL is our email communication process. Ms. Howard sends out emails advising of school activities, deadlines, report card distributions and school

news. *"I send information on school dress-up days too so parents won't wonder why their child is going through their closet for 80s attire or for that ugly Christmas sweater."* Current parents compliment and comment on these emails as keeping them informed and **connected** to the school. *"When students graduate, sometimes it's harder for me to say goodbye to the parents because we have developed a relationship over the four years."*

For two parent households, the email service keeps both sets of parents informed on school activities without having to hear things second hand. Parents may submit up to three (3) email addresses for this service. Email your child's name and email addresses to Ms. Howard at:

howardd@pcsb.org or (727) 588-4622



Attendance—an explanation from Ms. Howard

One of the hardest policies to explain is the attendance policy. Students and parents...and sometimes staff...get confused at what counts; what doesn't count; is it five or four absences...etc. My goal is to write this column well enough to have the reader completely understand the attendance policy. **Attendance in high school counts more and has higher consequences.**

truancy

Let's first discuss truancy. Truancy is when a student is absent and a parent hasn't contacted the school. As the system sees it, without a parent contact, the student is skipping school.

Officially, parents have 48 hours from the actual absence to notify the school. I'm not a stickler for this rule; however, your contact must be timely. You may call the ExCEL office at 588-4622, email me at howardd@pcsb.org or send in a note with your child upon return to school to authenticate the absence as being excused.



The State of Florida has mandated that students have good regular attendance. If the student is habitually truant, the state will revoke the student's driving privilege (or the ability to get a license). Once a driving privilege is revoked (suspended), it takes 30 days of nearly perfect attendance to have the privilege returned. For Largo High School, habitual truants will be referred to our Child Study Team who looks at problematic students and work together to support the students' successes in school. In the magnet program, we place students with poor attendance habits on probation and work at supporting punctuality.

5 times

Parents may excuse five (5) absences during the semester without any further documentation (such as a doctor's note). These five days can be whole days or partial (arriving late or leaving early) days. Once the parent exceeds the five excused absences, I am not permitted to correct any further absences. Please contact me with the absence as I'll write in the notation, "Sick, parent exceeded 5." The intention of the five absences a parent may excuse are for legitimate absences. The school board has officially stated in policy that being out of school for family vacations or trips; power outages at home; car troubles or missing the school bus are not legitimate reasons for missing school.

In the same policy, the school board has established that legitimate absences for going to the doctor, dentist, or eye doctor and appointments with the courts or attorneys (along with supporting documentation) are not limited. Students attending religious services or religious conferences (along with supporting documentation) are also excusable.

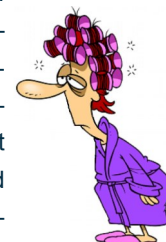


Students are considered tardy to class if they are not in the classroom before the final bell.

tardy

It may sound finicky, but their body...their person...the physical being must be in the classroom—not the hallway, not at the vending machine—no their books and book bag don't count either. I hear so many wonderful reasons why THIS tardy is not the same as being *really* tardy. "My books were there," sounds like the student was in the classroom at some point; however, it just doesn't count. Please remember that tardies accumulate absences too. For every three tardies equal one absence in the course. For example, if a student is tardy six times it equals two absences.

The only way I can write a pass to class to excuse a tardy for a student arriving late to school is with documentation of the **legitimate appointment** that happened that morning. Same rules apply for tardiness as they do for absences, car issues and power outages are not legitimate reasons for being late to school. Please don't drag mom into the office with hair curlers, slippers and robe (actually happened) to say, "It's my fault we overslept!" I empathize, but can't excuse the tardiness.



errors

Parents and students should periodically check Focus for errors in attendance. If you find an error in a single class period, the student should go to the teacher who reported the absence.

Most frequently the teacher "clicked" the wrong student absent in the system. By notifying the teacher, adjustments can be made to correct any errors. We also run reports on attendance on a weekly basis looking for irregularities.

All corrections should be made within a few days of detecting the error. I am not comfortable about challenging an absence that goes back weeks or months later. Do you remember what you had for dinner three weeks ago? Imagine a teacher with 150 students trying to recall attendance from a month ago. Timely challenges are important. The responsibility for monitoring attendance falls back onto the student.



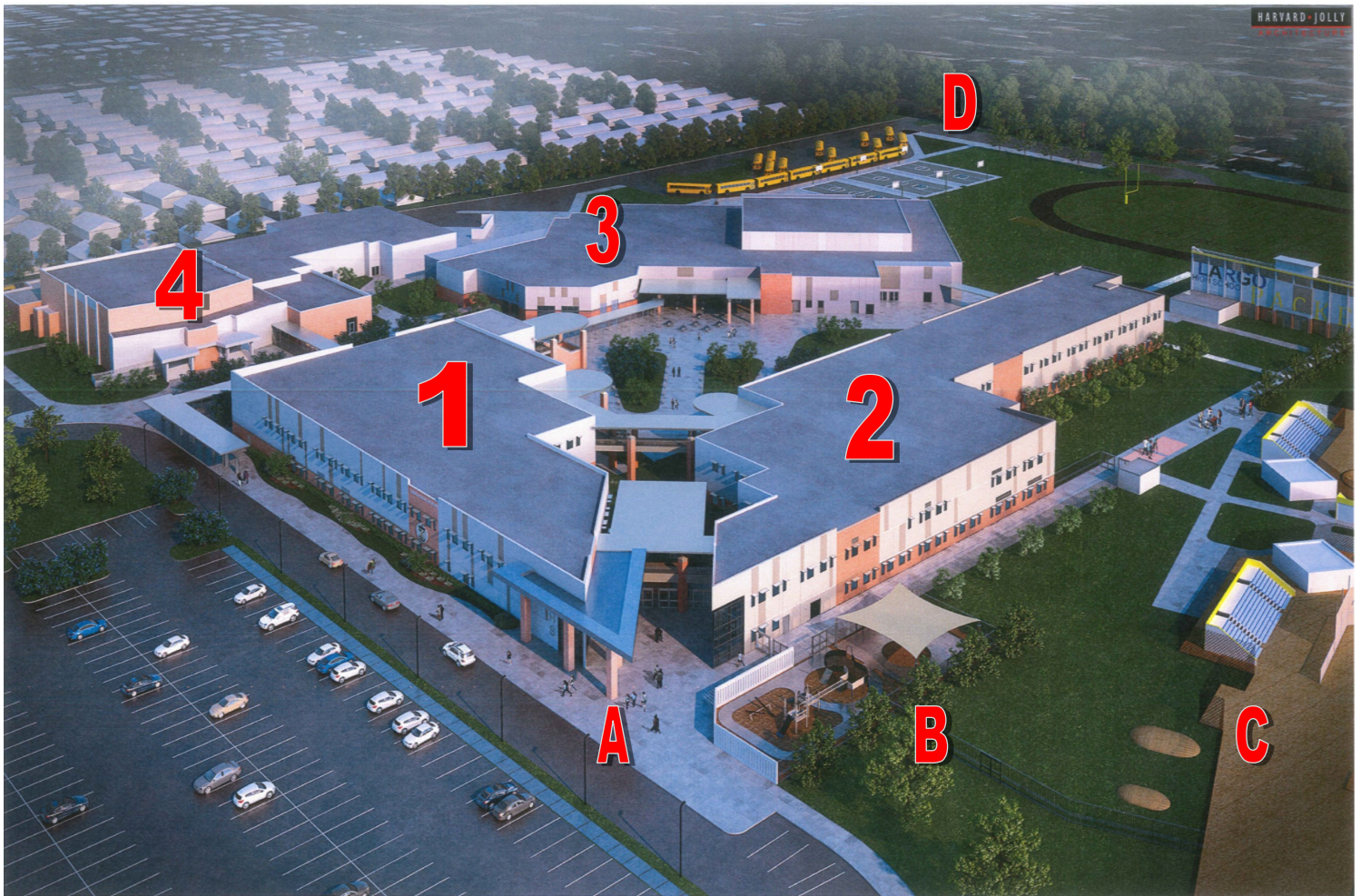
Finally, attendance for exams and exempting final tests. Students must have a "B" or better to exempt and have less than five absences in any class (no more than four days). If a student should accumulate a fifth absence in **ANY class** (including the tardy counts) then the student is unable to exempt ANY exams for that semester. Other rules apply about exempting which will be sent out prior to exams.

If you have any questions, please give me a call. I'm here to help you.

☺ Deb Howard

727-588-4622

howardd@pcsb.org



Architect's rendering of new campus.

Buildings 1 & 2 are classrooms & offices

Building 3 is the Library, Cafeteria and Gym

Building 4 is the Auditorium, Band, Chorus and Welding Rooms

A = Front entry, lobby is on the left side.

B = Playground for Packer Preschool & VPK

C = Softball/Baseball Complex

D = Bus loop & outside basketball courts

At the writing of this newsletter the classrooms have been assigned to teachers and we have a final idea on where everyone will be in the new buildings. As you can imagine we are very excited to have a brand new school. Ms. Howard says, "When I came here in 1989, I was told not to get too comfortable with my office area as we were getting a new school within months. It is almost 27 years later and I see the new building and am very excited at finally seeing a new school."

When looking at the picture above, the lobby area is boxed off with a set of gates (just out of sight in the image). These gates will be locked during the school day with students having to arrive through the main lobby once school starts. Above the gates is an open walkway between building 1 & 2.

The main courtyard in the center of the image will be a place for students to gather during our one lunch.

The ExCEL office will be located downstairs in building 2. ExCEL English and social studies will be downstairs in building 2. Math and science classrooms classes will be upstairs in building 2. Our classrooms will be in small strings of linking classrooms. English classrooms face the social studies classrooms across the hall. Math and science are similar.

We will start our move into the new building in May with the arrival of furniture. The creation of the softball/baseball fields and landscaping will be complete by February of 2017.



Buy a Brick

How would you like to leave your mark on your school? In reality you can purchase an engraved brick and have it placed in the **Packer Walk** for all to see. This multi-year project allows alumni and our community to leave a lasting footprint for years to come. You can order these bricks from LargohsAthleticBoosters.com. Mail order form and check to: **Largo High School, Attn: Athletic Boosters; 410 Missouri Avenue; Largo, FL 33770** There is various clipart that can be added including the school seal, packer pig or the ExCEL seal. **4 x 8 Personal Brick**, \$50 3 lines/20 characters per line with or without clipart. **8 x 8 Family Brick**, \$100 6 lines/20 characters per line with or without clipart.



ExCEL T-Shirts

Available in **Black & Navy Blue!**

\$12

(orders for shirts will be taken during orientation on May 12 and at beginning of August)
Cash or money order only.

LHS Magnets

Largo High School Magnets are for sale in the Bookkeeper's Office for **\$5**. The magnets are 5.5" round.



Largo High School Packer Gear

Get Largo High School Packer Gear at:
<http://mylocker.net/florida/largo/largo-high-school/index.html> (LINK is on front page of LHS web www.largo-hs.pcsb.org)

This site sells Largo shirts, hoodies, sweats and other gear. A percentage of the profits is sent directly to Largo High School which is used to support our students.



Packer Pride Day

**Saturday
August 6**

9:00 a.m. to 12 noon

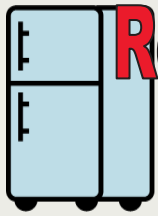
Come out to see the new campus. This event is open to the entire community. We anticipate a large population of alumni to visit the new school.

All students will be able to view their schedules online at home. Print a copy and use that schedules to see the new classrooms. (printed schedules MAY be available—we'll let students know via email before the event)



We anticipate groups selling shirts and Largo gear.

Add the date to your cell phone calendar to "save the date" for this big milestone!



Refrigerator Page

This handy page is designed for continued use.

2016 / 2017 LHS SCHOOL CALENDAR

Sat., Aug. 6 Packer Pride Day (see page 10)

Wed., Aug. 10 All schools open

Thurs., Aug. 27 Back-To-School Night (Open House)

Mon., Sept. 5 Labor Day Holiday - schools closed

Tues., Oct. 11 End of 1st Quarter

Wed., Oct. 12 ProEd Day - no school for students

Nov. 21 - 25 Thanksgiving Holidays

Fri., Dec. 16 End of 2nd Quarter/End of 1st Semester

Dec. 17 - Jan. 1, 2017 Winter Holidays



Mon., Jan. 2 ProEd Day - no school for students

----- Second semester begins -----

Tues., Jan. 3 Schools reopen. Classes resume.

Mon., Jan. 16 M. L. King Holiday - schools closed

Mon., Feb. 20 ProEd Day - no school for students

Fri., March 10 End of 3rd Quarter

Mon., March 13 - 17 Spring Holidays - schools closed

Mon., March 20 ProEd Day - no school for students

Fri., April 14 ProEd Day - no school for students

Thur., May 25 Last day for students



Websites

Largo High School: www.largo-hs.pcsb.org

ExCEL's Web Site: www.excel.pcsb.org

Pinellas County Schools: www.pcsb.org

Focus: <http://focus.pcsb.org>

SSRPM: <https://sap.pinellas.k12.fl.us/ssrpm/Logon.asp>

(SSRPM is the automated password reset program, once you create an account YOU can reset or retrieve your lost password)

Just for ExCEL Magnet Students & their Parents:

- Report an absence
- Request homework
- Deliveries to students
- Messages to magnet staff

Ms. Howard.....**588-4622**

"Consider me your secretary here!"

Answered from 6:30 a.m. to 2:30 p.m.

or email: **howardd@pcsb.org**

Keep us informed ...

We publish our home telephone numbers for our students and parents as a commitment to our students' success. Please feel free to call or email us at home if you have any questions.

Steve Beck	becks@pcsb.org
Allison Bryant	bryantal@pcsb.org
Joseph Cox	coxjos@pcsb.org
Stefanie Frump	frumps@pcsb.org
Debbie Howard	howardd@pcsb.org
Jeromy Johnson	johnsonjer@pcsb.org
Scott Kaplan	kaplans@pcsb.org
Mike Klapka	klapkam@pcsb.org
Missy Lyons	lyonsm@pcsb.org
Nicole McKenna	mckennan@pcsb.org
Erin Morris	morriser@pcsb.org
Bethany Petz	petzb@pcsb.org
Kathy Seitz	seitzk@pcsb.org
Shelley Steele	steelesh@pcsb.org
Jennifer Wheeler	wheelerjen@pcsb.org
Josh Wolfenden	wolfendenj@pcsb.org

This column left blank. Published copy shows after hours telephone numbers of staff.



Exploring Careers & Education in Leadership (ExCEL)

Largo High School
410 Missouri Avenue
Largo, Florida 33770

Parents' "to-do" list



Here is a list of things parents should accomplish this summer.

- ◆ Register your email address with Ms. Howard at: **howardd@pcsb.org** so you are included in her email communication.
- ◆ Bookmark both the Largo High School web page and the ExCEL web page so you will have school updates.
www.largo-hs.pcsb.org
www.excel.pcsb.org
- ◆ Log onto Focus to see your child's records. If you don't see a child on your account, notify Ms. Howard so she can connect your Focus account to your child (and other children you have in Pinellas County public schools)
- ◆ Check the ExCEL web site for summer reading and assignment requirements.



Before you shop...

Each year we hear, "if I only had known I wouldn't have bought.." from a parent whose child is being challenged by our dress code.

On our web page, www.largo-hs.pcsb.org is a tab "About Us." Under this tab are the school policies—including dress code. Please review these policies BEFORE shopping for clothes.

A decision has not been made (at the writing of this newsletter) if we are adopting a modified dress code next year.

